



CLARITY VIDEO WALLS

Rear-Projection Video Wall Displays



WHEN IMAGE EXPERIENCE MATTERS.

Planar's line of Clarity™ rear-projection displays has one thing in common. A reason for being:

• Designed for a purpose.

Planar takes a unique approach to designing digital displays, before we create them, we learn how they'll be used. We consider the environment, the technical requirements, and even our customers' business objectives. The result is a complete line of rear-projection displays that not only solves problems, but also creates opportunities.

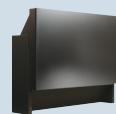
• Your image on display.

Planar innovative technology consistently delivers the highest image quality available in a large-screen format. Each digital display combines superior resolution, high contrast ratios, and brilliant colors for outstanding performance in a wide variety of environments. Your image looks great, and so do you.

• Plays nicely with others. Planar displays are designed to be compatible with a wide variety of components and technology platforms. Our systems can be integrated quickly and easily with the most popular image processors, networking technology, content management systems, and other audio-visual equipment.




• Looking better over time. Planar displays are designed and built to last. Each features reliable components and durable construction—along with our unsurpassed level of service and commitment to your success. With our displays, you'll not only minimize your expenses and maximize your returns, you'll have a guaranteed partner for the long-term.

Clarity Margay II









	Margay II	Margay II 70
MODEL	Margay II	Margay II 70
Resolution	1920 x 1080 (1080p)	1920 x 1080 (1080p)
Technology	DLP® SmoothPicture™ with BrilliantColor™ Techonology	DLP® SmoothPicture™ with BrilliantColor™ Techonology
Screen diagonal	50"	70"
Aspect ratio	16:9	16:9
Cabinet dimensions (WxHxD)	43.6" x 32.5" x 18.1" (110.8 cm x 82.5 cm x 46 cm)	61" x 41.6" x 25.4" (154.9 cm x 105.6 cm x 64.6 cm)
Screen type	PrecisionView-2 (PV2)	PrecisionView-2 (PV2)
Screen brightness	400 cd/m²	220 cd/m²
ANSI lumens	640 lumens	640 lumens
Contrast ratio	1600:1	1600:1
Lamp life	10,000	10,000
Lamp type	132 watt UHP	132 watt UHP
Data I/O	VGA to Full HD DSUB 15 x 1 (with loop through) DVI-D (with loop through)	VGA to Full HD DSUB 15 x 1 (with loop through) DVI-D (with loop through)
Video I/O options	Component-HD, Composite S-Video, SDI (with loop through)	Component-HD, Composite S-Video, SDI (with loop through)
Control	WallNet, RS-232, IR remote control	WallNet, RS-232, IR remote control
Set it and Forget it (SiFi™)	X	X
Auto Color Balance		
OPTIONAL Big Picture™	X	X
OPTIONAL WallNet™	X	X

continued...

		Clarity RX Series		Clarity RP Series	
					
MODEL		c50RX	c67RX	c50RP	c67RP
Resolution		1024 x 768 (XGA)	1024 x 768 (XGA)	1400 x 1050 (SXGA+)	1400 x 1050 (SXGA+)
Technology		DLP*	DLP*	DLP*	DLP*
Screen diagonal		50"	67"	50"	67"
Aspect ratio		4:3	4:3	4:3	4:3
Cabinet dimensions (WxHxD)		40" x 37.8" x 24.9" (101.6 cm x 96 cm x 63 cm)	53.5" x 49.1" x 31.5" (136 cm x 124.8 cm x 79.9 cm)	40" x 37.8" x 27.11" (101.6 cm x 96 cm x 69 cm)	53.5" x 49.1" x 33.7" (136 cm x 124.8 cm x 85.7 cm)
Screen type		Wide-view acrylic (WV) High-bright acrylic (HB)	Wide-view acrylic (WV) High-bright acrylic (HB)	Wide-view acrylic (WV) High-bright acrylic (HB)	Wide-view acrylic (WV) High-bright acrylic (HB)
Screen brightness (optimal) (cd/m²)		WV 259 HB 886	WV 143 HB 419	WV 308 HB 1055	WV 171 HB 586
ANSI lumens		633 lumens	633 lumens	756 lumens	756 lumens
Contrast ratio		<2000:1	<2000:1	<1600:1	<1600:1
Lamp life (median)		100 watt: 10,000 120 watt: 6,000	100 watt: 10,000 120 watt: 6,000	100 watt: 10,000 120 watt: 6,000	100 watt: 10,000 120 watt: 6,000
Lamp type		100-120 watt UHP Long Life Single and Dual auto switching options	100-120 watt UHP Long Life Single and Dual auto switching options	100-120 watt UHP Long Life Single and Dual auto switching options	100-120 watt UHP Long Life Single and Dual auto switching options
Data I/O		VGA to Full HD DSUB 15 x 2 (with loop through) DVI-D (with loop through)	VGA to Full HD DSUB 15 x 2 (with loop through) DVI-D (with loop through)	VGA to Full HD DSUB 15 x 2 (with loop through) DVI-D (with loop through)	VGA to Full HD DSUB 15 x 2 (with loop through) DVI-D (with loop through)
Video I/O options		Component-HD, Composite S-Video, SDI (with loop through)	Component-HD, Composite S-Video, SDI (with loop through)	Component-HD, Composite S-Video, SDI (with loop through)	Component-HD, Composite S-Video, SDI (with loop through)
Control		IR Remote, RS-232, RS-485, WallNet (with loop through)	IR Remote, RS-232, RS-485, WallNet (with loop through)	IR Remote, RS-232, RS-485, WallNet (with loop through)	IR Remote, RS-232, RS-485, WallNet (with loop through)
OPTIONAL	Big Picture™	X	X	X	X
	WallNet	X	X	X	X
	Set it and Forget it (SiFi™) Auto Color Balance	X	X	X	X

continued...

Clarity LED Series 					
					
MODEL	c70HD-LED	c50RP-LED	c67RP-LED	c50RX-LED	c67RX-LED
Resolution	Full HD 1920 x 1080	1400 x 1050 (SXGA+)	1400 x 1050 (SXGA+)	1024 x 768 (XGA)	1024 x 768 (XGA)
Technology	DLP*	DLP*	DLP*	DLP*	DLP*
Screen diagonal	70"	50"	67"	50"	67"
Aspect ratio	16:9	4:3	4:3	4:3	4:3
Cabinet dimensions (WxHxD)	61" x 44.6" x 30.9" (1549.4 cm x 1134.6 cm x 78.6 cm)	40" x 37.8" x 27.1" (101.6 cm x 96 cm x 69 cm)	53.5" x 49.1" x 33.7" (136 cm x 124.8 cm x 85.7 cm)	40" x 37.8" x 27.1" (101.6 cm x 96 cm x 69 cm)	53.5" x 49.1" x 33.7" (136 cm x 124.8 cm x 85.7 cm)
Screen type	PrecisionView-2 (PV2)	PrecisionView-4 (PV4) PrecisionView-1 (PV1)	PrecisionView-2 (PV2) PrecisionView-4 (PV4) PrecisionView-1 (PV1)	PrecisionView-4 (PV4) PrecisionView-1 (PV1)	PrecisionView-2 (PV2) PrecisionView-4 (PV4) PrecisionView-1 (PV1)
Screen brightness** (optimal) (cd/m ²)	213 cd/m ²	835 cd/m ² (PV4) 245 cd/m ² (PV1)	225 cd/m ² (PV2) 465 cd/m ² (PV4) 136 cd/m ² (PV1)	835 cd/m ² (PV4) 245 cd/m ² (PV1)	225 cd/m ² (PV2) 465 cd/m ² (PV4) 136 cd/m ² (PV1)
Engine output**	575 lumens	600 lumens	600 lumens	600 lumens	600 lumens
Contrast ratio**	1650:1	1750:1	1750:1	1200:1	1200:1
Illumination System Lifetime (median)	60,000 Hrs	60,000 Hrs	60,000 Hrs	60,000 Hrs	60,000 Hrs
Illumination System	Clarity LED RGB	Clarity LED RGB	Clarity LED RGB	Clarity LED RGB	Clarity LED RGB
Data I/O	VGA to FHD DSUB 15 x 2 (with loop through) DVI-D x 1 (with loop through)	VGA to FHD DSUB 15 x 2 (with loop through) DVI-D x 1 (with loop through)	VGA to FHD DSUB 15 x 2 (with loop through) DVI-D x 1 (with loop through)	VGA to FHD DSUB 15 x 2 (with loop through) DVI-D x 1 (with loop through)	VGA to FHD DSUB 15 x 2 (with loop through) DVI-D x 1 (with loop through)
Video I/O options	Component-HD, Composite S-Video, SDI (all with loop through)	Component-HD, Composite S-Video, SDI (with loop through)	Component-HD, Composite S-Video, SDI (with loop through)	Component-HD, Composite S-Video, SDI (with loop through)	Component-HD, Composite S-Video, SDI (with loop through)
Control	IR Remote, RS-2323, RS-485 (with loop through) WallNet	IR Remote, RS-2323, RS-485 (with loop through) WallNet	IR Remote, RS-2323, RS-485 (with loop through) WallNet	IR Remote, RS-2323, RS-485 (with loop through) WallNet	IR Remote, RS-2323, RS-485 (with loop through) WallNet
Set it and Forget it (SiFi™) Auto Color Balance	RGBCYMW Brightness and Color	RGBCYMW Brightness and Color	RGBCYMW Brightness and Color	RGBCYMW Brightness and Color	RGBCYMW Brightness and Color
OPTIONAL	Big Picture™	X	X	X	X
	WallNet	X	X	X	X

* All specifications are subject to change
** Optical specifications are optimal

For more information about Clarity rear-projection displays from Planar Systems, please call 503-748-1100 or visit www.planarcontrolroom.com.